

SHARP

Be Original.

MX-C528F
MX-C428F

Digital Full Colour Multifunctional System

**Convenient Functions to
Help You Work Smarter**



Space-Saving Design

With its small footprint* of 468 x 485 mm, this MFP will easily find a niche in your SOHO or larger office. Simply place it on a desk, under a counter, or anywhere that space is limited.

* "Footprint" refers to the part directly adjacent to the floor or desk space. The numerical value is for the MFP's base unit only.

Continuous Printing

Don't worry if the colour toner runs low during a print job. You can simply switch to B/W printing and finish the job seamlessly.

Ample Paper Capacity

A 550-sheet tray and a 100-sheet multipurpose feeder come standard. Four optional 550-sheet trays are available for a total paper capacity of 2,850 sheets.

Energy Efficient

This MFP comes with a number of energy-management features that reduce power consumption both during active use and during sleep mode.



The all-in-one solution for your connected office

Here's a smart MFP that packs in all the document functionality your office needs. Along with the convenience of cloud and wireless LAN connectivity, it has security features to keep your data safe. The user-friendly design includes a large touchscreen that makes it easy for anyone to operate. Welcome to a smoother workflow.

Wireless LAN Connections*

An optional wireless LAN is available that conforms to the IEEE 802.11 a/ac/b/g/n standards. This lets you connect to the MFP via network infrastructure or via Wi-Fi Direct® for mobile devices. Wi-Fi Direct allows peer-to-peer connection with compatible PCs and mobile devices. This comes in handy when you need quick access to an MFP—for example, one at a client's office. Because this wireless LAN is independent from an in-house network, you don't need to worry about security. What's more, it supports dual-band connectivity for both 2.4 GHz and 5 GHz wireless networks.

* Requires optional 27X0823, 27X6410, or 27X6430.

Cloud Service Connectivity

Directly from its control panel, the MFP can connect to popular cloud services such as OneDrive for Business, Google Drive™, Box, and Dropbox. You can easily print from the cloud or scan and upload to it.

AirPrint Compatible

The MFP supports the AirPrint printing feature in Apple's iOS and macOS operating systems. AirPrint automatically detects MFPs and printers on the same network. It then lets you print directly from a mobile device without the need for a print driver.

Easy-to-Use Interface

Operating the MFP is easy and intuitive with the free-tilting control panel and a full-flat colour LCD touchscreen—either 10.0 inches (MX-C528F) or 7.0 inches (MX-C428F). In Easy UI mode, the touchscreen displays simple icons for frequently used functions. And with the Preview function*, you can check the finish of a print and scan job in advance.

* MX-C428F requires optional 27X0400 or 57X9528.



MX-C528F

Front USB Port

At the front of the MFP is a USB port, which comes in handy when printing directly from a USB drive—an indispensable function for users who want quick machine access without a PC.

Device Management

Sharp Remote Device Manager* (SRDM) gives administrators centralised control of their networked MFPs and printers. This software covers system setup, security settings, troubleshooting, and more.

* Contact a Sharp customer representative for availability and other details.

Enhanced Security

Protect your intellectual property. A wide range of security features help to keep your information safe, whether it's in a document, on the device, or over your network. The optional Trusted Platform Module provides authentication, system integrity checks, and encryption capabilities.

Versatile Paper Handling

With the main paper trays and multipurpose feeder, the MFP can handle a wide variety of paper—including cardstock, envelopes, and small media like A6-size paper.

Handy Stapler

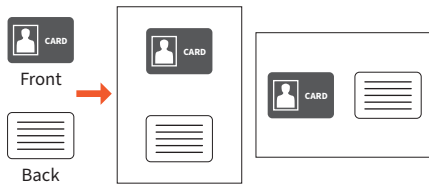
An easy-to-install optional stapler* lets you manually staple up to 20 sheets at the MFP without the need of a conventional stapler

* Requires a separate power supply.



ID Card Copy

The MFP lets you easily copy both sides of a card (ID cards, credit cards, etc.) onto a single page.



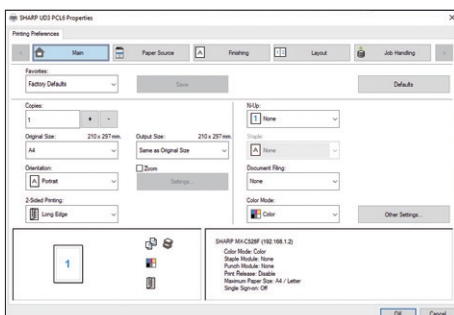
Office Direct Printing*

Print common Microsoft Office files without using a PC. With this MFP, you can print a Word, Excel, or PowerPoint file directly from a mobile device, USB drive, or file server.

* The actual printout may look different from what is displayed on the computer screen.

Printer Driver with Easy Setup

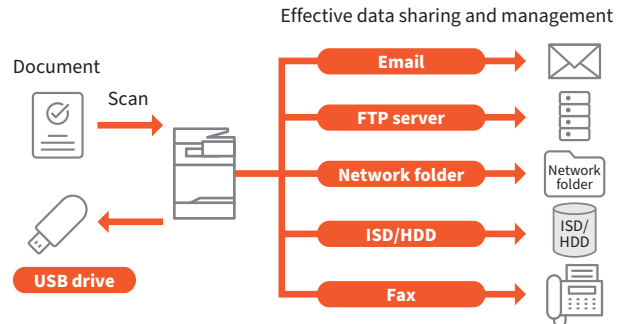
The printer driver setup window features a simple design that includes larger buttons and drop-down menus, making it easier than ever to use printer functions.



Multiple Scan Destinations

Scanned documents can be distributed in a number of ways. For example, they can be sent as email attachments or they can be scanned directly to an FTP server for storage. A compact PDF function* ensures that PDF files are sent and received smoothly.

* MX-C428F requires optional 27X0400 or 57X9528.



High-Efficiency Scanning

The MFP's standard-equipped DSPF (duplex single pass feeder) scans both pages of two-sided documents in one pass—in batches of up to 100 sheets. With two-sided scanning speeds of up to 98 opm*¹ (MX-C528F) or 80 opm*¹ (MX-C428F) for both colour and B/W documents, the MFP can complete large jobs with ease and efficiency. And multi-sheet detection*² means the DSPF will stop automatically when it detects two or more sheets being fed at once.

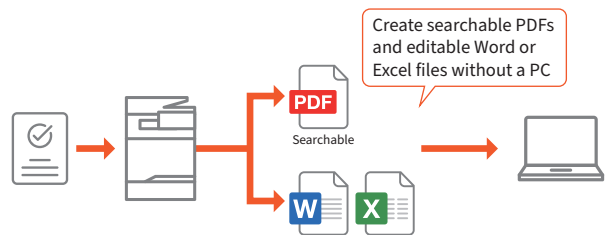
*1: Originals per minute; when feeding A4 sheets.

*2: Available on MX-C528F.

Convert Documents via OCR*

OCR capability on this MFP lets you convert a scanned document into a searchable PDF file or into an editable Microsoft Office Word or Excel file. This means you can do speedy text searches, even with large-volume documents, and you can easily copy and paste text data into other applications.

* MX-C428F requires optional OCR application with ISD/HDD. Contact a Sharp customer representative for details.



Convenient Faxing

The MFP supports colour faxes, paperless faxing, and other convenient functions. You can forward faxes to a pre-designated location, such as an FTP server, network folder, or email. This means you can check faxes even when you're out of the office. You can also block junk faxes, allowing you to save on wasted paper and toner. And, for extra security, you can hold incoming fax data and print it out at a time that suits you.

SPECIFICATIONS

General

Type	Desktop
Engine speed	A4 ^{*1} : Max. 50/40 ppm
Control panel display	MX-C528F: 10.0-inch colour LCD touchscreen MX-C428F: 7.0-inch colour LCD touchscreen
Paper size	Max. A4, min. A6
Paper capacity (75 g/m ²)	Standard: 650 sheets (550-sheet tray and 100-sheet multipurpose feeder) Maximum: 2,850 sheets (650 sheets & optional 550-sheet tray x 4)
Paper weight	Tray: 60 g/m ² to 218 g/m ² Multipurpose feeder: 60 g/m ² to 218 g/m ²
Memory	[MX-C528F] Standard: 2 GB 128 GB ISD ^{*2} Option: 500 GB HDD ^{*2} [MX-C428F] Standard: 2 GB Option: 128 GB ISD ^{*2} 500 GB HDD ^{*2}
Dimensions (W x D x H)	479 x 533 x 621 mm
Weight (approx.)	MX-C528F: 39.5 kg MX-C428F: 39.0 kg

Copier

Original paper size	Max. A4
First copy time ^{*3}	Colour: 6.2/7.2 sec. B/W: 5.6/6.5 sec.
Continuous copy	Max. 9,999 copies
Resolution	Max. 600 x 600 dpi
Zoom range	25% to 400% in 1% increments
Preset copy ratios	6 ratios (2R/4E)

Scanner

Scan method	Push scan (via control panel) Pull scan (TWAIN-compliant application)
Scan speed ^{*4} (colour & B/W)	[MX-C528F] One-sided: Max. 49 originals/min. Two-sided: Max. 98 originals/min. [MX-C428F] One-sided: Max. 40 originals/min. Two-sided: Max. 80 originals/min.
Resolution	Push scan: 75, 150, 200, 300, 400, 600 dpi Pull scan: 75, 150, 200, 300, 400, 600 dpi
File formats	TIFF, PDF, PDF/A-1a, PDF/A-1b, encrypted PDF, XPS, compact PDF ^{*5,6} , JPEG ^{*6} , searchable PDF ^{*7} , DOCX ^{*7} , XLSX ^{*7} , CSV ^{*7} , text (TXT) ^{*7} , rich text (RTF) ^{*7}
Scan destinations	Scan to email/FTP server/USB drive/network folder (SMB)/ISD/HDD ^{*5}

Printer

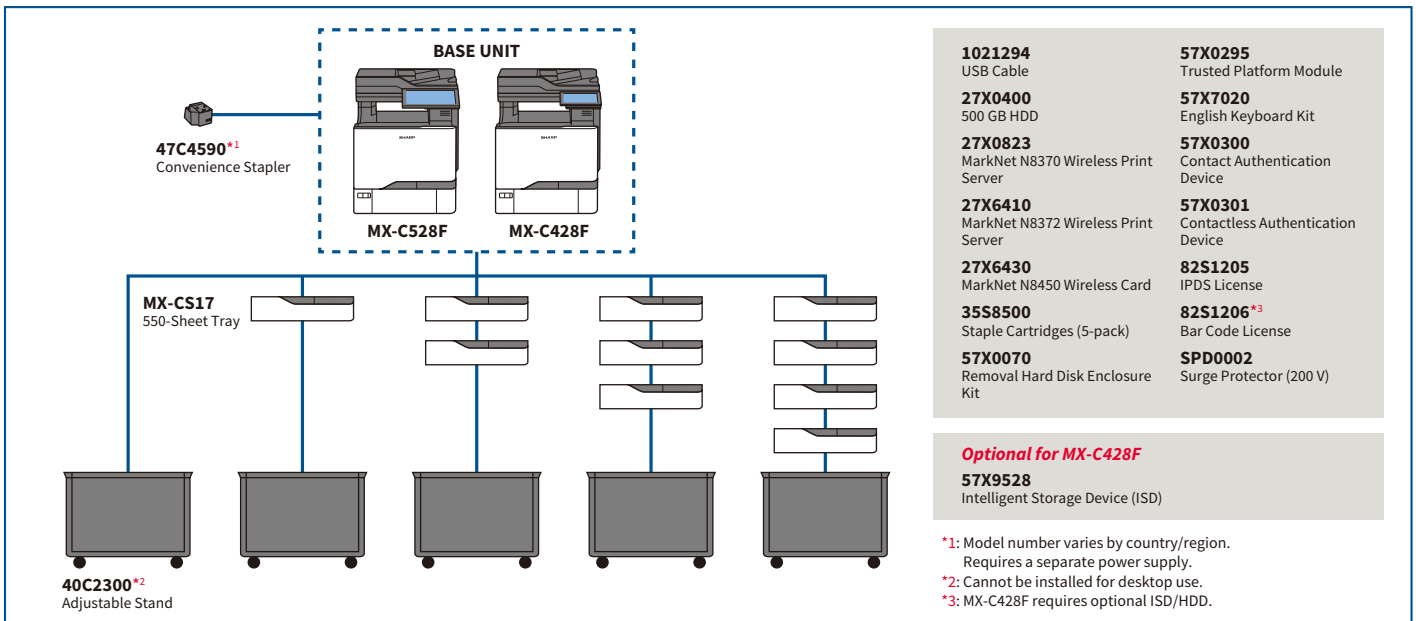
Resolution	1,200 x 1,200 dpi, 2,400 (equivalent) x 600 dpi
Interface	USB 2.0 (host, high-speed), 10Base-T/100Base-TX/1000Base-T, wireless LAN (IEEE 802.11 a/ac/b/g/n) ^{*8}
Supported OS	Windows Server 2012 R2, Windows Server 2016, Windows Server 2019, Windows Server 2022, Windows 8.1, Windows 10, Windows 11 Mac OS 10.15, 11, 12
Network protocols	TCP/IP
Printing protocols	LPD, Raw TCP (port 9100), enhanced IP (port 9400), secure IP (port 96xx), FTP, TFTP, IPP
PDL	PCL 5c/PCL 6 emulation, PostScript 3 emulation
Available fonts	94 fonts for PCL, 163 fonts for PostScript 3 emulation

Facsimile

Compression method	MH/MR/MMR/JBIG/JBIG2/JPEG
Communication protocol	Super G3/G3
Transmission time	Less than 3 seconds ^{*9}
Modem speed	33,600 bps to 2,400 bps with automatic fallback
Transmission resolution	B/W: From Standard to Ultra Fine Colour: From Fine to Super Fine
Recording size	A4 to A6
Memory	MX-C528F: 1 GB (built-in) MX-C428F: 18 MB (built-in) ^{*10}

- *1: Short-edge feeding.
 - *2: ISD/HDD capacity depends on procurement and sourcing status.
 - *3: Short-edge feeding of A4 sheets from 1st paper tray, using document glass, MFP in fully ready condition. May vary depending on operating conditions and environment.
 - *4: Scan speed will vary depending on the type of document, scan settings, operating conditions, and environment.
 - *5: MX-C428F requires optional ISD/HDD.
 - *6: Colour/greyscale only.
 - *7: MX-C428F requires optional OCR application with ISD/HDD. Contact a Sharp customer representative for details.
 - *8: Optional.
 - *9: Based on ITU-T test chart #1 at 33,600 bps.
 - *10: Faxes are stored on an optional ISD/HDD (if installed). Fax storage is 1 GB less than total hard drive capacity.
- Design and specifications are subject to change without prior notice.
• Wi-Fi Direct is a registered trademark of Wi-Fi Alliance®. Microsoft, Excel, OneDrive, PowerPoint, Windows, and Windows Server are trademarks of the Microsoft group of companies. Google Drive is a trademark of Google LLC. Box is a trademark, service mark, or registered trademark of Box, Inc. Dropbox is a trademark or registered trademark of Dropbox, Inc. AirPrint, Apple, macOS, and Mac are trademarks of Apple Inc., registered in the US and other countries. PCL is a registered trademark of Hewlett-Packard Company. PostScript is either a registered trademark or trademark of Adobe in the US and/or other countries. All other brand names and product names may be trademarks or registered trademarks of their respective owners.

SYSTEM CONFIGURATION



Certain optional equipment may not be available in some areas.